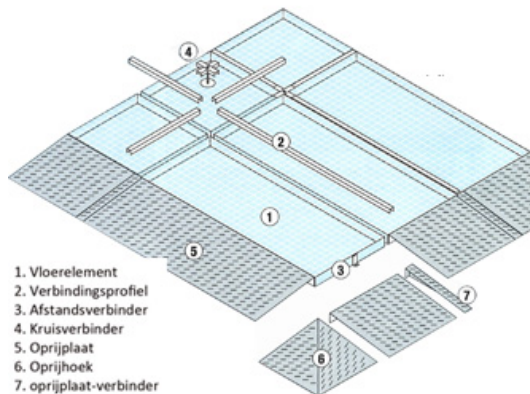


Created on: 23-01-2025 03:38:41 |
 Technical changes and imperfections reserved.

PRODUCT DATA SHEET Hiltru®: Hiltru coupling floor system overview



Size Hiltru coupling floor system overview

Article number	999999995
System components	7x floor element, 5x coupling piece, 5x ramp

Specifications Hiltru coupling floor system overview

In many situations, the coupling floor system can be a practical and, compared to a traditionally made liquid-proof floor, an inexpensive solution. Floors in existing rooms, under roofs or as loading floors can be made impermeable by installing and connecting separate elements. By using special couplings, two or more floor elements guarantee a complete liquid-tight floor. The products shown can be used within the PGS 15 regulations.

- Zulassung: Übereinstimmungserklärung (ÜHP) gem. Bauregelliste A teil 1 Dibt, Berlin.
- Removable, high load-bearing galvanized grid floor.
- Draining trays, gratings and ramps made of galvanized steel (DIN 50976).
- Drip trays and coupling profiles made of 3 mm galvanized steel from steel S235JR.
- With the Cross Connector (optional), 4 drip trays can be fixed at the junction, easily with an Allen bolt.
- Tracks and corners made of anti-slip and galvanized bulb plate 5 mm S235JR.
- Skid plate
- Ramps and corners (optional) can be driven over with a forklift truck.
- The anchoring profiles supplied as standard allow the drip trays to be anchored securely to the ground.
- Simple placement/assembly and always expandable or adaptable.

Created on: 23-01-2025 03:38:41 |
Technical changes and imperfections
reserved.

PRODUCT DATA SHEET Hiltru®: Coupling floor element model FW 1~ (0.25 m2)

Size Coupling floor element model FW 1~ (0.25 m2)

Article number	8320
Dimensions LxWxH external	500 x 500 x 118 mm
Collection capacity	20 liters
Weight	approx. 20 kg
Floor load	6500 kg/m ²
Field pressure load	600 kg (20x20 cm)
Material	made of galvanized steel 3 mm S235JR

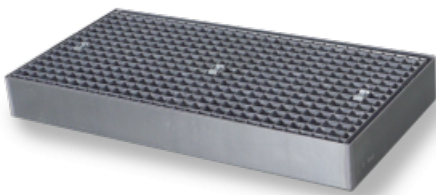
Specifications Coupling floor element model FW 1~ (0.25 m2)

In many situations, the coupling floor system can be a practical and, compared to a traditionally made liquid-proof floor, an inexpensive solution. Floors in existing rooms, under roofs or as loading floors can be made impermeable by installing and connecting separate elements. By using special couplings, two or more floor elements guarantee a complete liquid-tight floor. The products shown can be used within the PGS 15 regulations.

- Zulassung: Übereinstimmungserklärung (ÜHP) gem. Bauregelliste A teil 1 Dibt, Berlin.
- Removable, high load-bearing galvanized grid floor.
- Draining trays, gratings and ramps made of galvanized steel (DIN 50976).
- Drip trays and coupling profiles made of 3 mm galvanized steel from steel S235JR.
- With the Cross Connector (optional), 4 drip trays can be fixed at the junction, easily with an Allen bolt.
- Tracks and corners made of anti-slip and galvanized bulb plate 5 mm S235JR.
- Skid plate
- Ramps and corners (optional) can be driven over with a forklift truck.
- The anchoring profiles supplied as standard allow the drip trays to be anchored securely to the ground.
- Simple placement/assembly and always expandable or adaptable.

Created on: 23-01-2025 03:38:41 |
 Technical changes and imperfections reserved.

PRODUCT DATA SHEET Hiltru®: Coupling floor element model FW 2 ~ (0.5 m2)



Size Coupling floor element model FW 2 ~ (0.5 m2)

Article number	8319
Dimensions LxWxH external	1000 x 500 x 118 mm
Collection capacity	41 liters
Weight	approx. 36kg
Floor load	6500 kg/m ²
Field pressure load	600 kg (20x20 cm)
Material	made of galvanized steel 3 mm S235JR

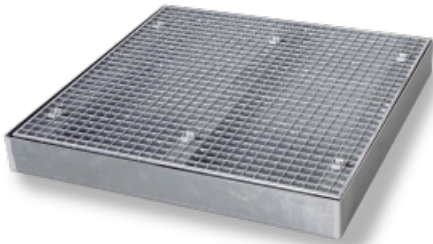
Specifications Coupling floor element model FW 2 ~ (0.5 m2)

In many situations, the coupling floor system can be a practical and, compared to a traditionally made liquid-proof floor, an inexpensive solution. Floors in existing rooms, under roofs or as loading floors can be made impermeable by installing and connecting separate elements. By using special couplings, two or more floor elements guarantee a complete liquid-tight floor. The products shown can be used within the PGS 15 regulations.

- Zulassung: Übereinstimmungserklärung (ÜHP) gem. Bauregelliste A teil 1 Dibt, Berlin.
- Removable, high load-bearing galvanized grid floor.
- Draining trays, gratings and ramps made of galvanized steel (DIN 50976).
- Drip trays and coupling profiles made of 3 mm galvanized steel from steel S235JR.
- With the Cross Connector (optional), 4 drip trays can be fixed at the junction, easily with an Allen bolt.
- Tracks and corners made of anti-slip and galvanized bulb plate 5 mm S235JR.
- Skid plate
- Ramps and corners (optional) can be driven over with a forklift truck.
- The anchoring profiles supplied as standard allow the drip trays to be anchored securely to the ground.
- Simple placement/assembly and always expandable or adaptable.

Created on: 23-01-2025 03:38:41 |
Technical changes and imperfections reserved.

PRODUCT DATA SHEET Hiltru®: Coupling floor element model FW 3 ~ (1 m2)



Size Coupling floor element model FW 3 ~ (1 m2)

Article number	8303
Dimensions LxWxH external	1000 x 1000 x 118 mm
Collection capacity	83 liters
Weight	approx. 66 kg
Floor load	6500 kg/m ²
Field pressure load	600 kg (20x20 cm)
Material	made of galvanized steel 3 mm S235JR

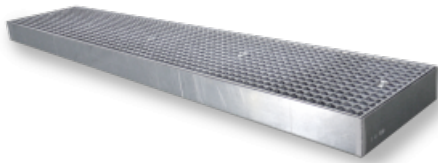
Specifications Coupling floor element model FW 3 ~ (1 m2)

In many situations, the coupling floor system can be a practical and, compared to a traditionally made liquid-proof floor, an inexpensive solution. Floors in existing rooms, under roofs or as loading floors can be made impermeable by installing and connecting separate elements. By using special couplings, two or more floor elements guarantee a complete liquid-tight floor. The products shown can be used within the PGS 15 regulations.

- Zulassung: Übereinstimmungserklärung (ÜHP) gem. Bauregelliste A teil 1 Dibt, Berlin.
- Removable, high load-bearing galvanized grid floor.
- Draining trays, gratings and ramps made of galvanized steel (DIN 50976).
- Drip trays and coupling profiles made of 3 mm galvanized steel from steel S235JR.
- With the Cross Connector (optional), 4 drip trays can be fixed at the junction, easily with an Allen bolt.
- Tracks and corners made of anti-slip and galvanized bulb plate 5 mm S235JR.
- Skid plate
- Ramps and corners (optional) can be driven over with a forklift truck.
- The anchoring profiles supplied as standard allow the drip trays to be anchored securely to the ground.
- Simple placement/assembly and always expandable or adaptable.

Created on: 23-01-2025 03:38:41 |
 Technical changes and imperfections reserved.

PRODUCT DATA SHEET Hiltru®: Coupling floor element model FW 4 ~ (1.2 m2)



Size Coupling floor element model FW 4 ~ (1.2 m2)

Article number	8318
Dimensions LxWxH external	2500 x 500 x 118 mm
Collection capacity	104 liters
Weight	approx. 74 kg
Floor load	6500 kg/m ²
Field pressure load	600 kg (20x20 cm)
Material	made of galvanized steel 3 mm S235JR

Specifications Coupling floor element model FW 4 ~ (1.2 m2)

In many situations, the coupling floor system can be a practical and, compared to a traditionally made liquid-proof floor, an inexpensive solution. Floors in existing rooms, under roofs or as loading floors can be made impermeable by installing and connecting separate elements. By using special couplings, two or more floor elements guarantee a complete liquid-tight floor. The products shown can be used within the PGS 15 regulations.

- Zulassung: Übereinstimmungserklärung (ÜHP) gem. Bauregelliste A teil 1 Dibt, Berlin.
- Removable, high load-bearing galvanized grid floor.
- Draining trays, gratings and ramps made of galvanized steel (DIN 50976).
- Drip trays and coupling profiles made of 3 mm galvanized steel from steel S235JR.
- With the Cross Connector (optional), 4 drip trays can be fixed at the junction, easily with an Allen bolt.
- Tracks and corners made of anti-slip and galvanized bulb plate 5 mm S235JR.
- Skid plate
- Ramps and corners (optional) can be driven over with a forklift truck.
- The anchoring profiles supplied as standard allow the drip trays to be anchored securely to the ground.
- Simple placement/assembly and always expandable or adaptable.

Created on: 23-01-2025 03:38:41 |
Technical changes and imperfections
reserved.

PRODUCT DATA SHEET Hiltru®: Coupling floor element model FW 5 ~ (2.5 m2)

Size Coupling floor element model FW 5 ~ (2.5 m2)

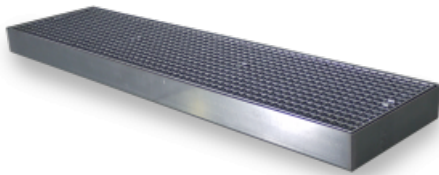
Article number	8301
Dimensions LxWxH external	2500 x 1000 x 118 mm
Collection capacity	210 liters
Weight	approx. 138 kg
Floor load	6500 kg/m ²
Field pressure load	600 kg (20x20 cm)
Material	made of galvanized steel 3 mm S235JR

Specifications Coupling floor element model FW 5 ~ (2.5 m2)

In many situations, the coupling floor system can be a practical and, compared to a traditionally made liquid-proof floor, an inexpensive solution. Floors in existing rooms, under roofs or as loading floors can be made impermeable by installing and connecting separate elements. By using special couplings, two or more floor elements guarantee a complete liquid-tight floor. The products shown can be used within the PGS 15 regulations.

- Zulassung: Übereinstimmungserklärung (ÜHP) gem. Bauregelliste A teil 1 Dibt, Berlin.
- Removable, high load-bearing galvanized grid floor.
- Draining trays, gratings and ramps made of galvanized steel (DIN 50976).
- Drip trays and coupling profiles made of 3 mm galvanized steel from steel S235JR.
- With the Cross Connector (optional), 4 drip trays can be fixed at the junction, easily with an Allen bolt.
- Tracks and corners made of anti-slip and galvanized bulb plate 5 mm S235JR.
- Skid plate
- Ramps and corners (optional) can be driven over with a forklift truck.
- The anchoring profiles supplied as standard allow the drip trays to be anchored securely to the ground.
- Simple placement/assembly and always expandable or adaptable.

Created on: 23-01-2025 03:38:41 |
Technical changes and imperfections
reserved.

PRODUCT DATA SHEET Hiltru®: Coupling floor element model FW 6 ~ (1 m2)

Size Coupling floor element model FW 6 ~ (1 m2)

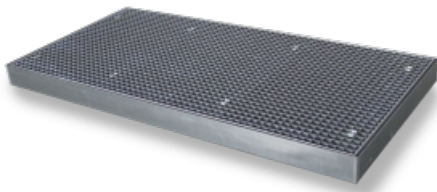
Article number	8313
Dimensions LxWxH external	2000 x 500 x 118 mm
Collection capacity	83 liters
Weight	approx. 64 kg
Floor load	6500 kg/m ²
Field pressure load	600 kg (20x20 cm)
Material	made of galvanized steel 3 mm S235JR

Specifications Coupling floor element model FW 6 ~ (1 m2)

In many situations, the coupling floor system can be a practical and, compared to a traditionally made liquid-proof floor, an inexpensive solution. Floors in existing rooms, under roofs or as loading floors can be made impermeable by installing and connecting separate elements. By using special couplings, two or more floor elements guarantee a complete liquid-tight floor. The products shown can be used within the PGS 15 regulations.

- Zulassung: Übereinstimmungserklärung (ÜHP) gem. Bauregelliste A teil 1 Dibt, Berlin.
- Removable, high load-bearing galvanized grid floor.
- Draining trays, gratings and ramps made of galvanized steel (DIN 50976).
- Drip trays and coupling profiles made of 3 mm galvanized steel from steel S235JR.
- With the Cross Connector (optional), 4 drip trays can be fixed at the junction, easily with an Allen bolt.
- Tracks and corners made of anti-slip and galvanized bulb plate 5 mm S235JR.
- Skid plate
- Ramps and corners (optional) can be driven over with a forklift truck.
- The anchoring profiles supplied as standard allow the drip trays to be anchored securely to the ground.
- Simple placement/assembly and always expandable or adaptable.

Created on: 23-01-2025 03:38:41 |
Technical changes and imperfections
reserved.

PRODUCT DATA SHEET Hiltru®: Coupling floor element model FW 7 ~ (2 m2)

Size Coupling floor element model FW 7 ~ (2 m2)

Article number	8314
Dimensions LxWxH external	2000 x 1000 x 118 mm
Collection capacity	168 liters
Weight	approx. 122 kg
Floor load	6500 kg/m ²
Field pressure load	600 kg (20x20 cm)
Material	made of galvanized steel 3 mm S235JR

Specifications Coupling floor element model FW 7 ~ (2 m2)

In many situations, the coupling floor system can be a practical and, compared to a traditionally made liquid-proof floor, an inexpensive solution. Floors in existing rooms, under roofs or as loading floors can be made impermeable by installing and connecting separate elements. By using special couplings, two or more floor elements guarantee a complete liquid-tight floor. The products shown can be used within the PGS 15 regulations.

- Zulassung: Übereinstimmungserklärung (ÜHP) gem. Bauregelliste A teil 1 Dibt, Berlin.
- Removable, high load-bearing galvanized grid floor.
- Draining trays, gratings and ramps made of galvanized steel (DIN 50976).
- Drip trays and coupling profiles made of 3 mm galvanized steel from steel S235JR.
- With the Cross Connector (optional), 4 drip trays can be fixed at the junction, easily with an Allen bolt.
- Tracks and corners made of anti-slip and galvanized bulb plate 5 mm S235JR.
- Skid plate
- Ramps and corners (optional) can be driven over with a forklift truck.
- The anchoring profiles supplied as standard allow the drip trays to be anchored securely to the ground.
- Simple placement/assembly and always expandable or adaptable.

Created on: 23-01-2025 03:38:41 |
Technical changes and imperfections
reserved.

PRODUCT DATA SHEET Hiltru®: Coupling profile 500



Size Coupling profile 500

Article number	8321
Dimension LxH	470 x 52 mm
Material	made of galvanized steel 3 mm S235JR

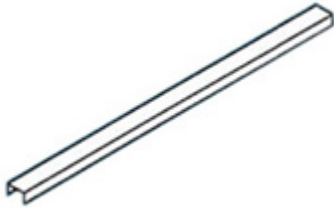
Specifications Coupling profile 500

In many situations, the coupling floor system can be a practical and, compared to a traditionally made liquid-proof floor, an inexpensive solution. Floors in existing rooms, under roofs or as loading floors can be made impermeable by installing and connecting separate elements. By using special couplings, two or more floor elements guarantee a complete liquid-tight floor. The products shown can be used within the PGS 15 regulations.

- Zulassung: Übereinstimmungserklärung (ÜHP) gem. Bauregelliste A teil 1 Dibt, Berlin.
- Removable, high load-bearing galvanized grid floor.
- Draining trays, gratings and ramps made of galvanized steel (DIN 50976).
- Drip trays and coupling profiles made of 3 mm galvanized steel from steel S235JR.
- With the Cross Connector (optional), 4 drip trays can be fixed at the junction, easily with an Allen bolt.
- Tracks and corners made of anti-slip and galvanized bulb plate 5 mm S235JR.
- Skid plate
- Ramps and corners (optional) can be driven over with a forklift truck.
- The anchoring profiles supplied as standard allow the drip trays to be anchored securely to the ground.
- Simple placement/assembly and always expandable or adaptable.

Created on: 23-01-2025 03:38:41 |
Technical changes and imperfections
reserved.

PRODUCT DATA SHEET Hiltru®: Coupling profile 1000



Size Coupling profile 1000

Article number	8307
Dimension LxH	970 x 52 mm
Material	made of galvanized steel 3 mm S235JR

Specifications Coupling profile 1000

In many situations, the coupling floor system can be a practical and, compared to a traditionally made liquid-proof floor, an inexpensive solution. Floors in existing rooms, under roofs or as loading floors can be made impermeable by installing and connecting separate elements. By using special couplings, two or more floor elements guarantee a complete liquid-tight floor. The products shown can be used within the PGS 15 regulations.

- Zulassung: Übereinstimmungserklärung (ÜHP) gem. Bauregelliste A teil 1 Dibt, Berlin.
- Removable, high load-bearing galvanized grid floor.
- Draining trays, gratings and ramps made of galvanized steel (DIN 50976).
- Drip trays and coupling profiles made of 3 mm galvanized steel from steel S235JR.
- With the Cross Connector (optional), 4 drip trays can be fixed at the junction, easily with an Allen bolt.
- Tracks and corners made of anti-slip and galvanized bulb plate 5 mm S235JR.
- Skid plate
- Ramps and corners (optional) can be driven over with a forklift truck.
- The anchoring profiles supplied as standard allow the drip trays to be anchored securely to the ground.
- Simple placement/assembly and always expandable or adaptable.

Created on: 23-01-2025 03:38:41 |
Technical changes and imperfections
reserved.

PRODUCT DATA SHEET Hiltru®: Coupling profile 2000



Size Coupling profile 2000

Article number	8322
Dimension LxH	1970 x 52 mm
Material	made of galvanized steel 3 mm S235JR

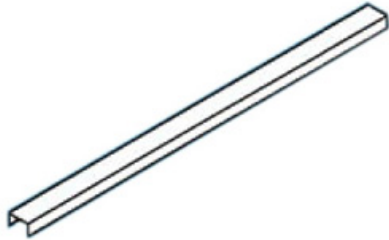
Specifications Coupling profile 2000

In many situations, the coupling floor system can be a practical and, compared to a traditionally made liquid-proof floor, an inexpensive solution. Floors in existing rooms, under roofs or as loading floors can be made impermeable by installing and connecting separate elements. By using special couplings, two or more floor elements guarantee a complete liquid-tight floor. The products shown can be used within the PGS 15 regulations.

- Zulassung: Übereinstimmungserklärung (ÜHP) gem. Bauregelliste A teil 1 Dibt, Berlin.
- Removable, high load-bearing galvanized grid floor.
- Draining trays, gratings and ramps made of galvanized steel (DIN 50976).
- Drip trays and coupling profiles made of 3 mm galvanized steel from steel S235JR.
- With the Cross Connector (optional), 4 drip trays can be fixed at the junction, easily with an Allen bolt.
- Tracks and corners made of anti-slip and galvanized bulb plate 5 mm S235JR.
- Skid plate
- Ramps and corners (optional) can be driven over with a forklift truck.
- The anchoring profiles supplied as standard allow the drip trays to be anchored securely to the ground.
- Simple placement/assembly and always expandable or adaptable.

Created on: 23-01-2025 03:38:41 |
Technical changes and imperfections
reserved.

PRODUCT DATA SHEET Hiltru®: coupling profile 2500



Size coupling profile 2500

Article number	8305,
Dimension LxH	2470 x 52 mm
Material	made of galvanized steel 3 mm S235JR

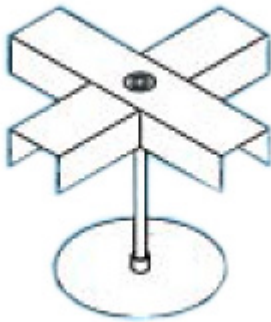
Specifications coupling profile 2500

In many situations, the coupling floor system can be a practical and, compared to a traditionally made liquid-proof floor, an inexpensive solution. Floors in existing rooms, under roofs or as loading floors can be made impermeable by installing and connecting separate elements. By using special couplings, two or more floor elements guarantee a complete liquid-tight floor. The products shown can be used within the PGS 15 regulations.

- Zulassung: Übereinstimmungserklärung (ÜHP) gem. Bauregelliste A teil 1 Dibt, Berlin.
- Removable, high load-bearing galvanized grid floor.
- Draining trays, gratings and ramps made of galvanized steel (DIN 50976).
- Drip trays and coupling profiles made of 3 mm galvanized steel from steel S235JR.
- With the Cross Connector (optional), 4 drip trays can be fixed at the junction, easily with an Allen bolt.
- Tracks and corners made of anti-slip and galvanized bulb plate 5 mm S235JR.
- Skid plate
- Ramps and corners (optional) can be driven over with a forklift truck.
- The anchoring profiles supplied as standard allow the drip trays to be anchored securely to the ground.
- Simple placement/assembly and always expandable or adaptable.

Created on: 23-01-2025 03:38:41 |
Technical changes and imperfections
reserved.

PRODUCT DATA SHEET Hiltru®: Cross connector



Size Cross connector

Article number	8309
Dimension LxH	-
Material	made of galvanized steel 3 mm S235JR

Specifications Cross connector

In many situations, the coupling floor system can be a practical and, compared to a traditionally made liquid-proof floor, an inexpensive solution. Floors in existing rooms, under roofs or as loading floors can be made impermeable by installing and connecting separate elements. By using special couplings, two or more floor elements guarantee a complete liquid-tight floor. The products shown can be used within the PGS 15 regulations.

- Zulassung: Übereinstimmungserklärung (ÜHP) gem. Bauregelliste A teil 1 Dibt, Berlin.
- Removable, high load-bearing galvanized grid floor.
- Draining trays, gratings and ramps made of galvanized steel (DIN 50976).
- Drip trays and coupling profiles made of 3 mm galvanized steel from steel S235JR.
- With the Cross Connector (optional), 4 drip trays can be fixed at the junction, easily with an Allen bolt.
- Tracks and corners made of anti-slip and galvanized bulb plate 5 mm S235JR.
- Skid plate
- Ramps and corners (optional) can be driven over with a forklift truck.
- The anchoring profiles supplied as standard allow the drip trays to be anchored securely to the ground.
- Simple placement/assembly and always expandable or adaptable.

Created on: 23-01-2025 03:38:41 |
Technical changes and imperfections
reserved.

PRODUCT DATA SHEET Hiltru®: Loading ramp 500



Size Loading ramp 500

Article number	8323
Dimension LxB	470 x 850 mm
Material	made of galvanized steel 5 mm S235JR

Specifications Loading ramp 500

In many situations, the coupling floor system can be a practical and, compared to a traditionally made liquid-proof floor, an inexpensive solution. Floors in existing rooms, under roofs or as loading floors can be made impermeable by installing and connecting separate elements. By using special couplings, two or more floor elements guarantee a complete liquid-tight floor. The products shown can be used within the PGS 15 regulations.

- Zulassung: Übereinstimmungserklärung (ÜHP) gem. Bauregelliste A teil 1 Dibt, Berlin.
- Removable, high load-bearing galvanized grid floor.
- Draining trays, gratings and ramps made of galvanized steel (DIN 50976).
- Drip trays and coupling profiles made of 3 mm galvanized steel from steel S235JR.
- With the Cross Connector (optional), 4 drip trays can be fixed at the junction, easily with an Allen bolt.
- Tracks and corners made of anti-slip and galvanized bulb plate 5 mm S235JR.
- Skid plate
- Ramps and corners (optional) can be driven over with a forklift truck.
- The anchoring profiles supplied as standard allow the drip trays to be anchored securely to the ground.
- Simple placement/assembly and always expandable or adaptable.

Created on: 23-01-2025 03:38:41 |
Technical changes and imperfections
reserved.

PRODUCT DATA SHEET Hiltru®: Loading ramp 1000



Size Loading ramp 1000

Article number	8310
Dimension LxB	970 x 850 mm
Material	made of galvanized steel 5 mm S235JR

Specifications Loading ramp 1000

In many situations, the coupling floor system can be a practical and, compared to a traditionally made liquid-proof floor, an inexpensive solution. Floors in existing rooms, under roofs or as loading floors can be made impermeable by installing and connecting separate elements. By using special couplings, two or more floor elements guarantee a complete liquid-tight floor. The products shown can be used within the PGS 15 regulations.

- Zulassung: Übereinstimmungserklärung (ÜHP) gem. Bauregelliste A teil 1 Dibt, Berlin.
- Removable, high load-bearing galvanized grid floor.
- Draining trays, gratings and ramps made of galvanized steel (DIN 50976).
- Drip trays and coupling profiles made of 3 mm galvanized steel from steel S235JR.
- With the Cross Connector (optional), 4 drip trays can be fixed at the junction, easily with an Allen bolt.
- Tracks and corners made of anti-slip and galvanized bulb plate 5 mm S235JR.
- Skid plate
- Ramps and corners (optional) can be driven over with a forklift truck.
- The anchoring profiles supplied as standard allow the drip trays to be anchored securely to the ground.
- Simple placement/assembly and always expandable or adaptable.

Created on: 23-01-2025 03:38:41 |
Technical changes and imperfections
reserved.

PRODUCT DATA SHEET Hiltru®: Loading ramp 2000



Size Loading ramp 2000

Article number	8315
Dimension LxB	1970 x 850 mm
Material	made of galvanized steel 5 mm S235JR

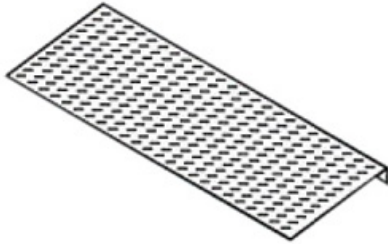
Specifications Loading ramp 2000

In many situations, the coupling floor system can be a practical and, compared to a traditionally made liquid-proof floor, an inexpensive solution. Floors in existing rooms, under roofs or as loading floors can be made impermeable by installing and connecting separate elements. By using special couplings, two or more floor elements guarantee a complete liquid-tight floor. The products shown can be used within the PGS 15 regulations.

- Zulassung: Übereinstimmungserklärung (ÜHP) gem. Bauregelliste A teil 1 Dibt, Berlin.
- Removable, high load-bearing galvanized grid floor.
- Draining trays, gratings and ramps made of galvanized steel (DIN 50976).
- Drip trays and coupling profiles made of 3 mm galvanized steel from steel S235JR.
- With the Cross Connector (optional), 4 drip trays can be fixed at the junction, easily with an Allen bolt.
- Tracks and corners made of anti-slip and galvanized bulb plate 5 mm S235JR.
- Skid plate
- Ramps and corners (optional) can be driven over with a forklift truck.
- The anchoring profiles supplied as standard allow the drip trays to be anchored securely to the ground.
- Simple placement/assembly and always expandable or adaptable.

Created on: 23-01-2025 03:38:41 |
Technical changes and imperfections
reserved.

PRODUCT DATA SHEET Hiltru®: Loading ramp 2500



Size Loading ramp 2500

Article number	8311,
Dimension LxB	2470 x 850 mm
Material	made of galvanized steel 5 mm S235JR

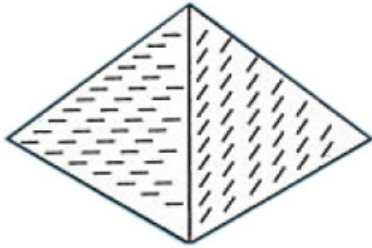
Specifications Loading ramp 2500

In many situations, the coupling floor system can be a practical and, compared to a traditionally made liquid-proof floor, an inexpensive solution. Floors in existing rooms, under roofs or as loading floors can be made impermeable by installing and connecting separate elements. By using special couplings, two or more floor elements guarantee a complete liquid-tight floor. The products shown can be used within the PGS 15 regulations.

- Zulassung: Übereinstimmungserklärung (ÜHP) gem. Bauregelliste A teil 1 Dibt, Berlin.
- Removable, high load-bearing galvanized grid floor.
- Draining trays, gratings and ramps made of galvanized steel (DIN 50976).
- Drip trays and coupling profiles made of 3 mm galvanized steel from steel S235JR.
- With the Cross Connector (optional), 4 drip trays can be fixed at the junction, easily with an Allen bolt.
- Tracks and corners made of anti-slip and galvanized bulb plate 5 mm S235JR.
- Skid plate
- Ramps and corners (optional) can be driven over with a forklift truck.
- The anchoring profiles supplied as standard allow the drip trays to be anchored securely to the ground.
- Simple placement/assembly and always expandable or adaptable.

Created on: 23-01-2025 03:38:41 |
Technical changes and imperfections
reserved.

PRODUCT DATA SHEET Hiltru®: Loading ramp corner



Size Loading ramp corner

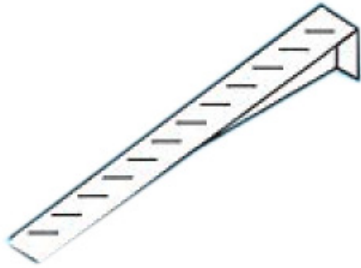
Article number	8312
Dimension LxB	-
Material	made of galvanized steel 5 mm S235JR

Specifications Loading ramp corner

In many situations, the coupling floor system can be a practical and, compared to a traditionally made liquid-proof floor, an inexpensive solution. Floors in existing rooms, under roofs or as loading floors can be made impermeable by installing and connecting separate elements. By using special couplings, two or more floor elements guarantee a complete liquid-tight floor. The products shown can be used within the PGS 15 regulations.

- Zulassung: Übereinstimmungserklärung (ÜHP) gem. Bauregelliste A teil 1 Dibt, Berlin.
- Removable, high load-bearing galvanized grid floor.
- Draining trays, gratings and ramps made of galvanized steel (DIN 50976).
- Drip trays and coupling profiles made of 3 mm galvanized steel from steel S235JR.
- With the Cross Connector (optional), 4 drip trays can be fixed at the junction, easily with an Allen bolt.
- Tracks and corners made of anti-slip and galvanized bulb plate 5 mm S235JR.
- Skid plate
- Ramps and corners (optional) can be driven over with a forklift truck.
- The anchoring profiles supplied as standard allow the drip trays to be anchored securely to the ground.
- Simple placement/assembly and always expandable or adaptable.

Created on: 23-01-2025 03:38:41 |
Technical changes and imperfections
reserved.

PRODUCT DATA SHEET Hiltru®:

Size

Article number	8306
Length	850 mm
Material	made of galvanized steel 5 mm S235JR

Specifications

In many situations, the coupling floor system can be a practical and, compared to a traditionally made liquid-proof floor, an inexpensive solution. Floors in existing rooms, under roofs or as loading floors can be made impermeable by installing and connecting separate elements. By using special couplings, two or more floor elements guarantee a complete liquid-tight floor. The products shown can be used within the PGS 15 regulations.

- Zulassung: Übereinstimmungserklärung (ÜHP) gem. Bauregelliste A teil 1 Dibt, Berlin.
- Removable, high load-bearing galvanized grid floor.
- Draining trays, gratings and ramps made of galvanized steel (DIN 50976).
- Drip trays and coupling profiles made of 3 mm galvanized steel from steel S235JR.
- With the Cross Connector (optional), 4 drip trays can be fixed at the junction, easily with an Allen bolt.
- Tracks and corners made of anti-slip and galvanized bulb plate 5 mm S235JR.
- Skid plate
- Ramps and corners (optional) can be driven over with a forklift truck.
- The anchoring profiles supplied as standard allow the drip trays to be anchored securely to the ground.
- Simple placement/assembly and always expandable or adaptable.